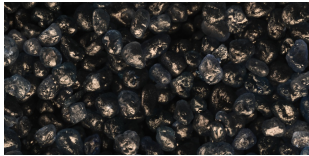


# Technical Data Sheet

## Yukon Black<sup>™</sup> Proppants

### Description



Yukon Black<sup>™</sup> proppants are an innovative curable resin coated fracturing sand available in 16/30 and 20/40 mesh sizes. The Yukon Black resin system is designed specifically for low temperature reservoirs and is applied to high quality frac sand for superior performance. Incorporating Hexion's newest Stress Bond<sup>™</sup> resin technology, the proppant bonds in the fracture with closure stress, providing high conductivity and proppant flowback control.

### Typical Applications

Fracture treatments:

- At closure stress up to 55 MPa [8,000 psi]
- At bottom-hole static temperatures from 24 - 71°C [75 - 160°F]
- Where flowback control is necessary in low temperature reservoirs

### Technical Advantages and Benefits

- Low temperature bonding down to 24°C [75°F] bottom-hole static temperature without the use of a low temperature consolidation aid
- Reduces proppant fines generation and migration
- Helps prevent proppant flowback
- Stress Bond technology helps prevent wellbore consolidation
- Frac fluid and beaker friendly

### Typical Properties

---

Yukon Black<sup>™</sup> Proppants  
<https://www.hexion.com/en-US/product/yukon-black>

Generated: October 2, 2022  
Issue Date:  
Revision: 3/9/2017 12:00:00 AM

® and <sup>™</sup> Licensed trademarks of Hexion Inc.

The information provided herein was believed by Hexion Inc. ("Hexion") to be accurate at the time of preparation or prepared from sources believed to be reliable, but it is the responsibility of the user to investigate and understand other pertinent sources of information, to comply with all laws and procedures applicable to the safe handling and use of the product and to determine the suitability of the product for its intended use. All products supplied by Hexion are subject to Hexion's terms and conditions of sale. **HEXION MAKES NO WARRANTY, EXPRESS OR IMPLIED, CONCERNING THE PRODUCT OR THE MERCHANTABILITY OR FITNESS THEREOF FOR ANY PURPOSE OR CONCERNING THE ACCURACY OF ANY INFORMATION PROVIDED BY HEXION**, except that the product shall conform to Hexion's specifications. Nothing contained herein constitutes an offer for the sale of any product.

Property	Value	Unit
Absolute Volume	0.390 [0.0467], 0.388 [0.0465]	cm <sup>3</sup> /g [gal/lb]
API Mesh Size	16/30, 20/40	
Bulk Density	1.49 [12.4], 1.51 [12.6]	g/cm <sup>3</sup> [lb/gal]
Color	greenish-black to black	
Compatibility	Fully compatible with most commonly used fracturing fluids, both water and oil-based systems. Testing with fluids prior to pumping is advised.	
Composition	resin coated frac sand	
Particle Size Distribution	meets or exceeds API RP 19C	
Physical State	solid granule	
Pipe Fill Factor	0.671 [0.0806], 0.662 [0.0794]	cm <sup>3</sup> /g [gal/lb]
Resin Type	thermosetting, curable	
Solubility in HCl/HF acid, API RP 19C	&#60; / = 3	weight %
Specific gravity	2.56, 2.58	
Turbidity	< 250	NTU (FTU)

## Technical Considerations

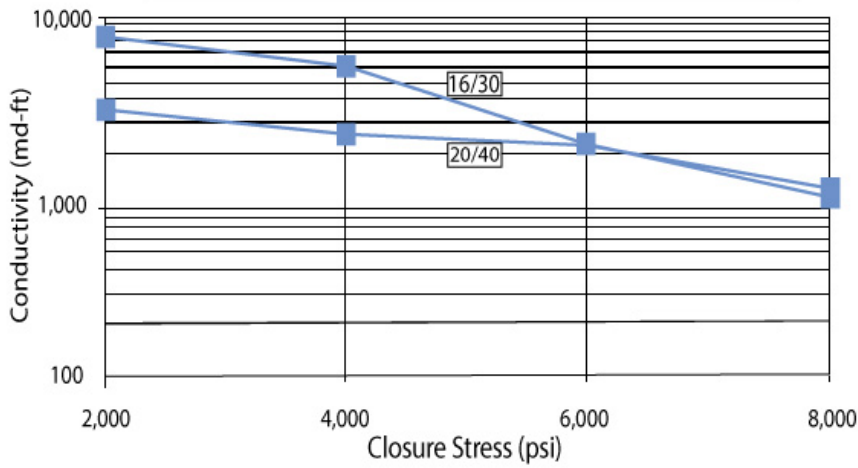
- Grain-to-grain contact must occur and closure stress must be applied during the cure period for proper bonding
- Consolidation of curable product at bottom-hole static temperatures below 24°C [75°F] is achieved by use of our AcTivator™ low temperature consolidation aid

### Long-Term Conductivity

Stim-Lab, Inc. Consortium Long-Term Baseline Procedure

Proppant Concentration: 9.8 kg/m<sup>2</sup> [2 lb<sub>m</sub>/ft<sup>2</sup>], Temperature: 66°C [150°F] [b<sub>m</sub>/ft<sup>2</sup>], Temperature: 66°C [150°F]

Closure Stress (psi)	2,000	4,000	6,000	8,000
Size	Conductivity (md-ft)			
16/30	8,631	5,202	2,397	1,069
20/40	3,297	2,923	2,342	1,133



## Contact Information

Hexion  
Oilfield Technology Group  
15366 Park Row  
Houston, Texas 77084 USA  
+1 281 646 2800 [www.hexion.com/oilfield](http://www.hexion.com/oilfield)

Customer Service  
+1 800 626 2116 [otg.customerservice@hexion.com](mailto:otg.customerservice@hexion.com)

Technical Inquiries [otg.customerservice@hexion.com](mailto:otg.customerservice@hexion.com)